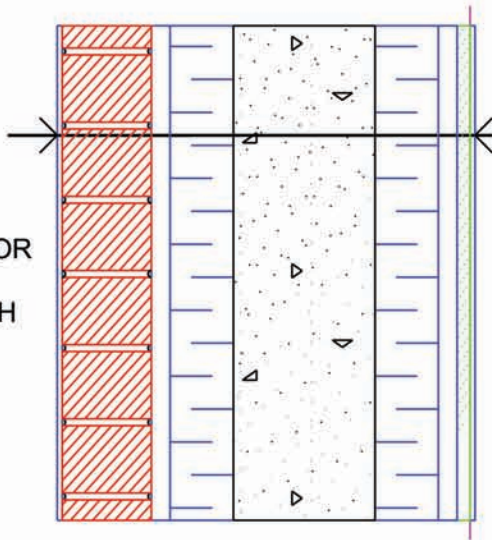


EXTERIOR
-23.0°C
90.0% RH



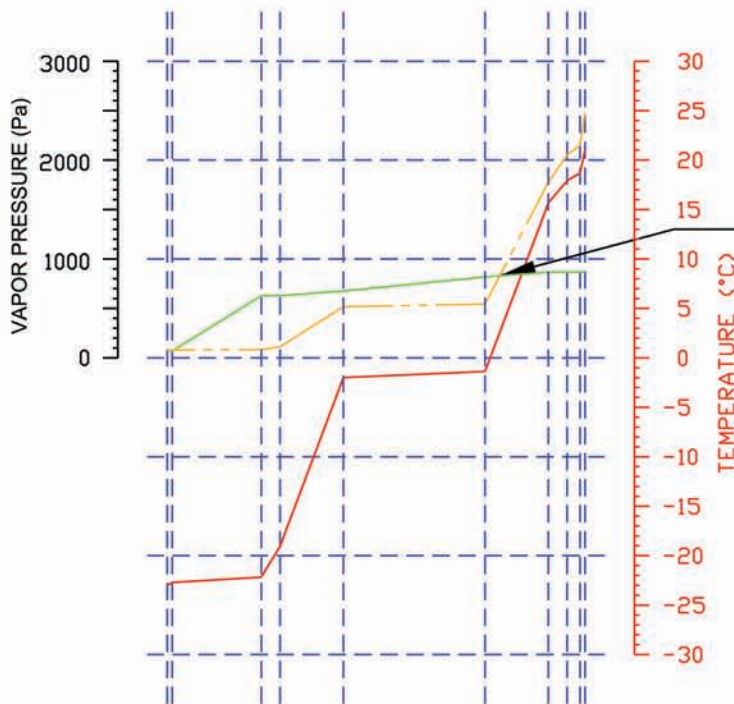
INTERIOR
21.0°C
35.0% RH

DESCRIPTION

DESCRIPTION	RSI	R
Exterior air film	0.03	0.2
Clay brick 3.5" (90 mm)	0.06	0.3
Air space, 3/4" (19.0 mm)	0.33	1.9
Polystyrene exp. Type II, 2.5" (64 mm)	1.79	10.2
Concrete, 5 5/8" (143 mm)	0.06	0.4
Polystyrene exp. Type II, 2.5" (64 mm)	1.79	10.2
Air space, 3/4" (19.0 mm)	0.24	1.3
Gypsum panel, 1/2" (13.0 mm)	0.08	0.5
Paint latex int. white mat	0.00	0.0
Interior air film	0.24	1.4

Total Thermal Resistance 4.62 26.2

Thermal Conductivity K = 0.2164



There is condensation in the given assembly at this location.
The condensation rate is 2.186E-05 g/m²/sec.
or 1.889E-03 litres/m²/day.

The heat loss rate is 9.52 Watt/m².
The dewpoint temperature is 2.6 degrees Celsius.

Legend

- Temperature
- Vapor pressure for continuity of flow
- - - Saturated vapor pressure



TITLE

Thermal Analysis Big Block 1600 5-5/8" (143 mm)
Clay brick (ext) and gypsum (int)