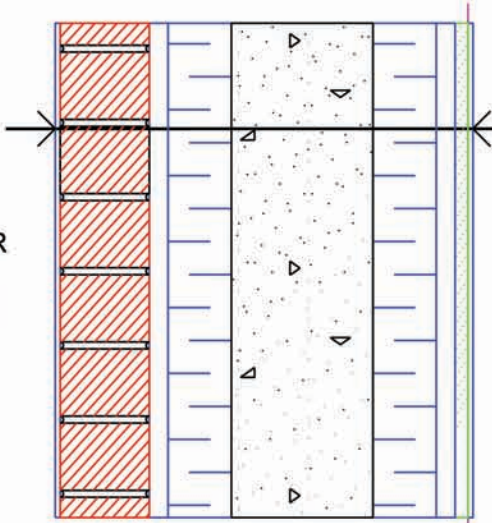


EXTERIOR  
-23.0°C  
90.0% RH



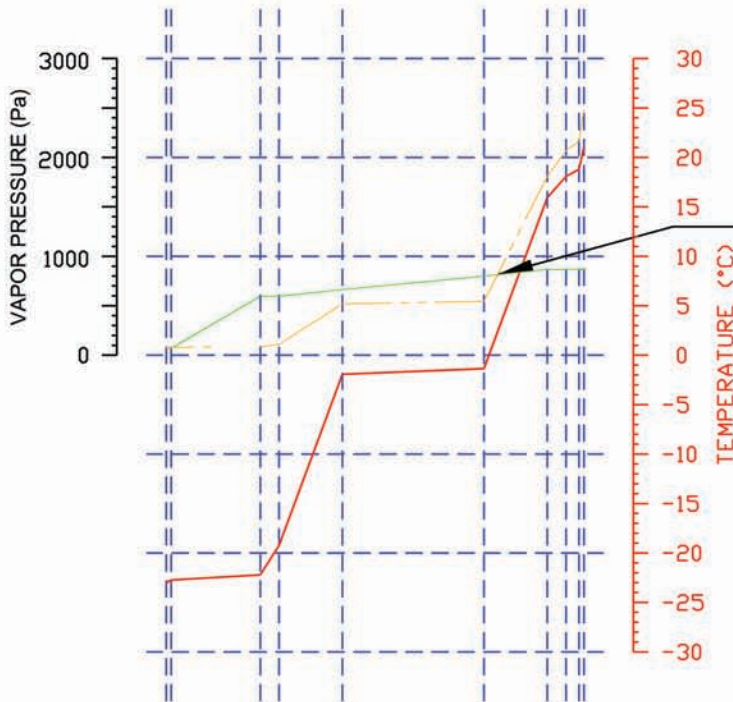
INTERIOR  
21.0°C  
35.0% RH

DESCRIPTION

DESCRIPTION	RSI	R
Exterior air film	0.03	0.2
Clay brick 3.5" (90 mm)	0.06	0.3
Air space, 3/4" (19.0 mm)	0.33	1.9
Polystyrene exp. Type III, 2.5" (64 mm)	1.92	10.9
Concrete, 5 5/8" (143 mm)	0.06	0.4
Polystyrene exp. Type III, 2.5" (64 mm)	1.92	10.9
Air space, 3/4" (19.0 mm)	0.24	1.3
Gypsum panel, 1/2" (13.0 mm)	0.08	0.5
Paint latex int. white mat	0.00	0.0
Interior air film	0.24	1.4

Total Thermal Resistance 4.88 27.7

Thermal Conductivity K = 0.2049



There is condensation in the given assembly at this location.  
The condensation rate is 1.406E-05 g/m2/sec.  
or 1.215E-03 litres/m2/day.

The heat loss rate is 9.01 Watt/m2.  
The dewpoint temperature is 2.3 degrees Celsius.

Legend

- Temperature
- Vapor pressure for continuity of flow
- - - Saturated vapor pressure



TITLE

Thermal analysis Flex 850 5-5/8" (143 mm)  
Clay brick (ext) and gypsum (int)